



# ComponentOne® Doc·To·Help® 2009



## One Tool, Many Outputs

Use a single set of documents to create the output formats below with one click.

- **ComponentOne NetHelp™**  
The Most Innovative Browser-based Help in the Industry
- **HTML Help**
- **Printed Manuals**
- **WinHelp**
- **Help 2.0**
- **JavaHelp**

## Key Features

- **NEW** Built-in XML-based editor
- **NEW** Reusable project settings
- **NEW** Embedded Help for .NET applications
- **NEW** Microsoft Word to XHTML converter
- **NEW** Style sheet / CSS editor
- Integration with Microsoft Word, FrontPage, and Adobe Dreamweaver
- Content variables (reusable content “chunks”)
- Insert Flash/DemoWorks
- Team Authoring Support
- Adobe RoboHelp, HTML Help, and WinHelp converters

## ▼ All-in-one authoring and publishing solution

ComponentOne Doc-To-Help 2009 has everything you need to author, edit, and publish documentation your end-users will love.

**Author:** Create content once using your favorite editor (e.g., Microsoft Word, Adobe Dreamweaver, or Doc-To-Help’s new built-in XML-based editor).

**Edit:** Enjoy the convenience of visual project management features such as a topics organizer, related topics editor, and drag-and-drop linking. Plus, save time with automatic Table of Contents, Index, and Glossary generation.

**Publish:** Generate a combination of outputs with just one-click (online Help, platform independent Web content, and press-ready manuals)—without changing or reformatting content.

## ▼ Why people are choosing Doc-To-Help

**Publish Professional Quality Online and Print Content No Matter What the Source is:** Whether you are writing in Doc-To-Help’s editor, Microsoft Word, or HTML, both print and online output will be professional quality.

**Generate As Many Versions as You Like From a Single Project, with a Single Click:** Imagine producing different version of print and online documentation just by making a menu selection. The time savings are outstanding.

**Easily Leverage Existing Content:** Start with content you already have. Doc-To-Help can import/parse Word, HTML, and XHTML files as well as RoboHelp, HTML Help, and WinHelp projects.

**True XML Editing with Word-like Simplicity:** Author directly in Doc-To-Help’s editor, if you choose, and it will create standards compliant source code for you.

**Everything Is in One Box:** You get all this in one application. There is no need to buy and use multiple products.

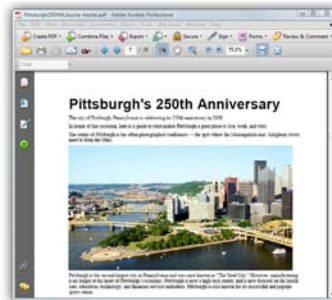
▼ Professional quality outputs with a single click



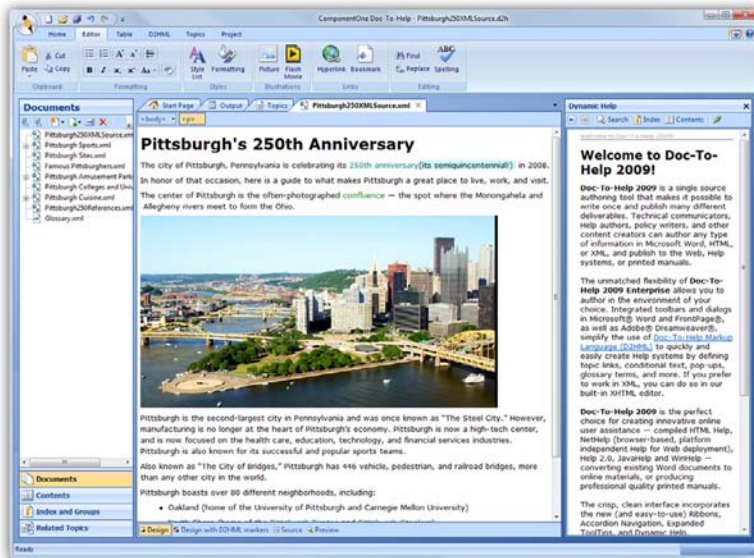
NetHelp for the Web



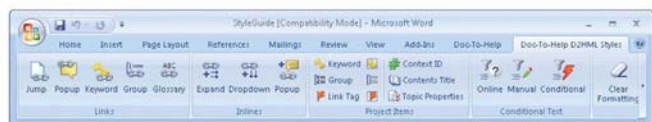
Online Help for Applications



Print-Ready Manuals



▼ ComponentOne Doc-To-Help 2009 has everything you need to author, edit, and publish documentation your end-users will love.



▼ Doc-To-Help also gives you the option to author in Microsoft Word, FrontPage, and Adobe Dreamweaver.

