

Your favorite IDE just got better!



Microsoft® Visual Studio® 2010 Professional is an integrated environment that simplifies creating, debugging and deploying applications. Unleash your creativity and bring your vision to life with powerful design surfaces and innovative collaboration methods for developers and designers. Work within a personalized environment, targeting a growing number of platforms, including Microsoft SharePoint® and cloud applications and accelerate the coding process by using your existing skills. Integrated support for Test-First Development and new debugging tools let you find and fix bugs quickly and easily to ensure high quality solutions.

 Microsoft®
Visual Studio® 2010
Professional

Creativity Unleashed

Create what you can imagine with powerful editing and visual design tools. Visual Studio opens new possibilities for your applications by unlocking the power of the processor on your local machine and in the cloud.

Simplicity Through Integration

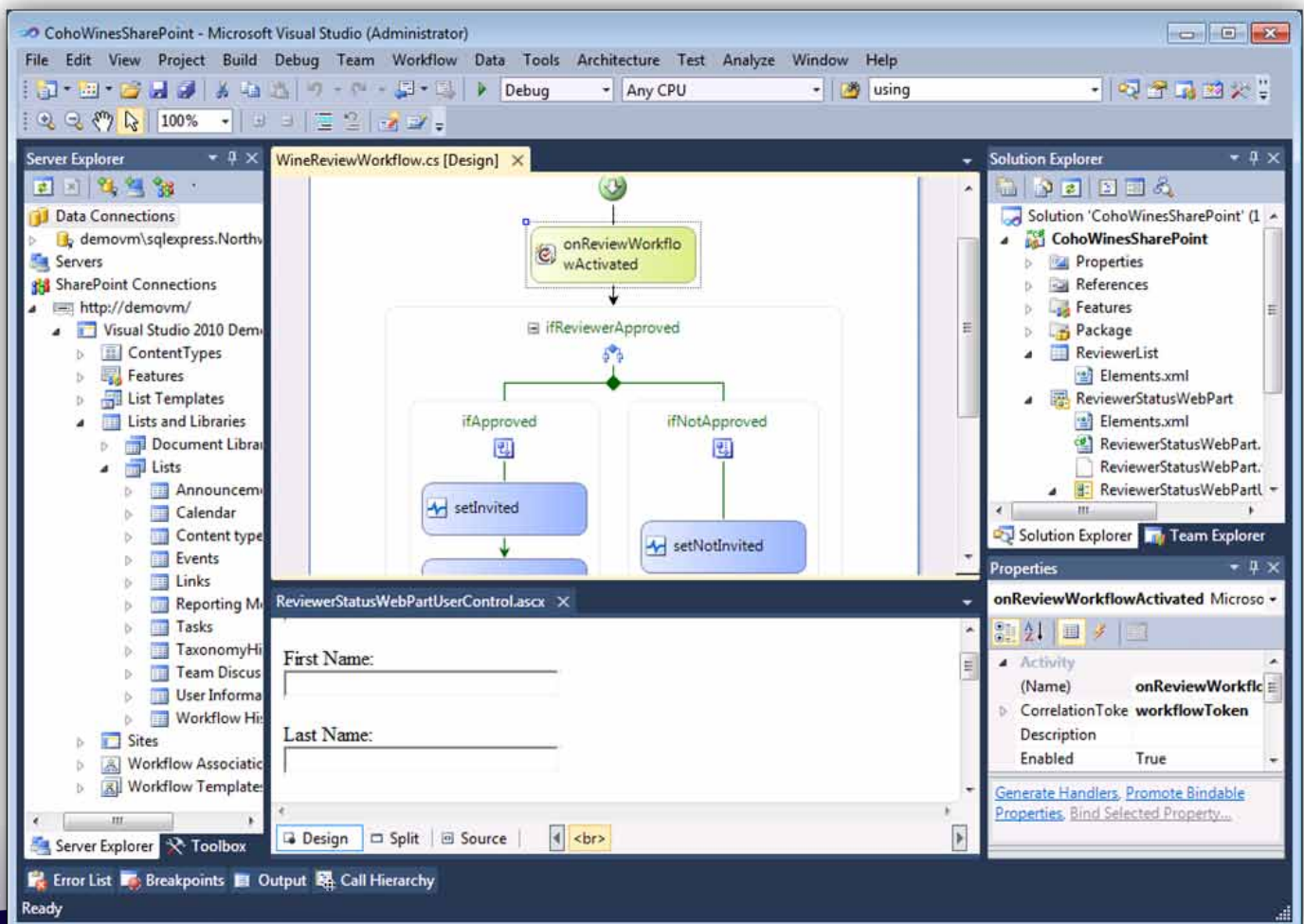
Visual Studio 2010 Professional offers an integrated environment where developers can use existing skills to code, debug, unit test, and deploy a growing number of application types. Visual Studio simplifies common tasks and provides a personalized experience that lets developers explore the depth of underlying platforms.

SharePoint Explorer

SharePoint Explorer helps you connect to, and browse an existing SharePoint Server. You can view artifacts including custom lists, document libraries, and Web parts from inside of Visual Studio.

Quality Code Ensured

Powerful tools help you deliver quality code quickly. With integrated support for test-first development as well as new debugging tools for multi-core programming you can easily find and fix bugs to deliver a quality solution.



Top ten benefits

- **Quickly interpret your code**

The new code editor makes it easy to zoom in on your code, highlight method references, and overlay powerful features.

- **Create rich user experiences**

Use new visual designers for Windows Presentation Foundation and Silverlight to target Windows®7 and the Web.

- **Get scalability from Windows® Azure™**

Integrated project templates, debugging, and publishing make it easy to deploy to Microsoft's cloud computing platform.

- **Open up new capabilities**

Use integrated parallel programming support to add new capabilities on your application when it runs on a multi-core processor machine.

- **Customize Visual Studio to fit your style**

Key IDE enhancements--including support for multiple monitors and improved readability--that make the familiar environment even more productive.

- **Use your existing skills**

Work with SharePoint development, including tooling for Web Parts, Lists, Workflows, Events and more, so you can bring great new customized collaboration tools to your company.

- **Practice Test-First Development**

Focus on your application logic while all the stub code necessary for compiling your unit tests is generated by Visual Studio.

- **Spend less time debugging**

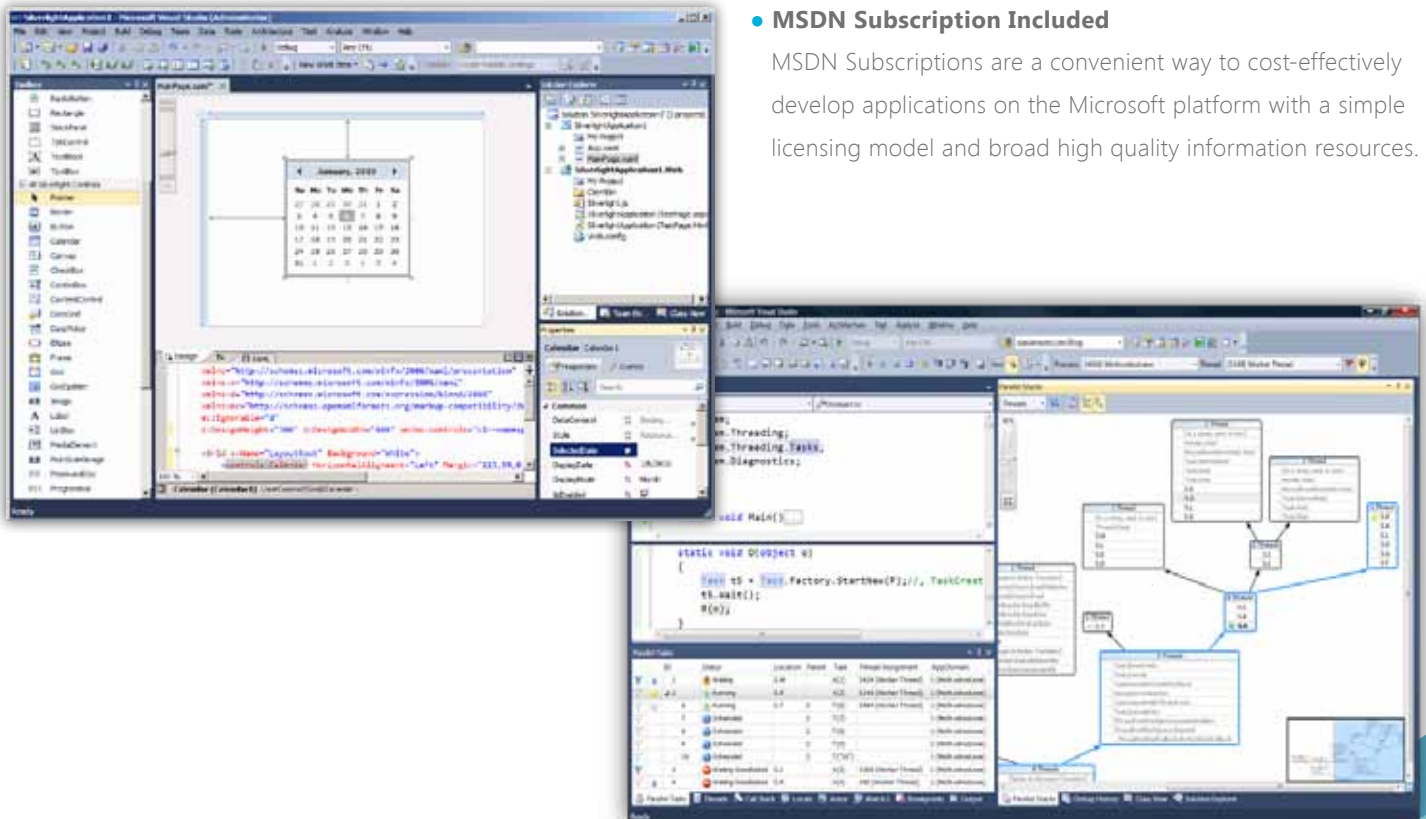
The inline call hierarchy helps quickly trace a program's execution flow without invoking the debugger. You can also use breakpoint labels make debugging easier.

- **Integrated Version Control, Bug Tracking and Build Automation**

Visual Studio 2010 Professional with MSDN includes Team Foundation Server 2010 the ideal source control, bug tracking and build automation system for Visual Studio users. The Team Foundation Server basic install option is ideal for desktop use and the natural migration path for Microsoft Visual SourceSafe users.

- **MSDN Subscription Included**

MSDN Subscriptions are a convenient way to cost-effectively develop applications on the Microsoft platform with a simple licensing model and broad high quality information resources.



Visual Studio 2010 Feature Comparison	Visual Studio 2010			Visual Studio Test Professional 2010
	Ultimate	Premium	Professional	
Development Platform Support				
Windows, Web and Cloud Development	•	•	•	
Office and SharePoint Development	•	•	•	
Architecture and Modeling				
Architecture Explorer, Layer Diagram and Dependency Validation	•			
Read-only diagrams (UML, Layer, DGML Graphs)	•	•		
Database Development				
Deployment, Change Management, Test Data Generation, Unit Testing	•	•		
Debugging, Diagnostics and Testing				
IntelliTrace™ (Historical Debugging), Web Performance Testing, Load Testing ¹	•			
Static Code Analysis, Code Metrics, Profiling, Code Coverage, Test Impact Analysis, Coded UI Test	•	•		
Unit Testing	•	•	•	
Test and Lab Management				
Microsoft® Test Manager, Test Case Management, Manual Test Execution, Fast Forward for Manual Testing	•			•
Virtual environment setup & tear down, Provision environment from template, Checkpoint environment through Test Manager 2010 (Visual Studio Lab Management 2010 required) ²	•			•
Team Foundation Server				
Version Control, Work Item Tracking, Build Automation, Team Portal, Reporting & Business Intelligence, Agile Planning Workbook, Team Explorer	•	•	•	•
MSDN Subscription benefits				
Priority support in MSDN Forums, MSDN Magazine, Flash newsletter, Online Concierge	•	•	•	•
Technical support incidents	4	4	2	2
Microsoft® e-learning collections (typically 10 courses or 20 hours)	2	2	1	1
Windows® Azure™ Platform	•†	•†	•†	
MSDN Subscription - Software for Production Use				
Microsoft® Visual Studio® Team Foundation Server 2010 plus one CAL	•	•	•	•
Microsoft® Office Professional Plus 2010, Project Professional 2010, Visio® Premium 2010, Expression Studio 3	•	•		
MSDN Subscription - Software for Development and Test Use³				
Windows (client and server operating systems), Microsoft® SQL Server®, Toolkits, Software Development Kits, Driver Development Kits	•	•	•	•
Microsoft® Office, Dynamics®, All other Servers, Windows Embedded	•	•		

† Azure benefits vary by subscription level; see the MSDN Subscription site for details: <http://msdn.microsoft.com/subscriptions/> Subject to change and subject to availability.

1. May require one or more Microsoft® Visual Studio® Load Test Virtual User Pack 2010.

2. Microsoft® Visual Studio® Lab Management 2010 is not included with Visual Studio 2010 Ultimate.

3. Per-user license allows unlimited installations and use for designing, developing, testing, and demonstrating applications. UML is a registered trademark of Object Management Group, Inc.

This material is provided for informational purposes only. Microsoft makes no warranties, express or implied.