

# Collaborate, communicate, deliver



**Microsoft Visual Studio Team Foundation Server 2010** is the collaboration platform at the core of Microsoft's application lifecycle management solution. Team Foundation Server 2010 automates the software delivery process and gives organizations the tools they need to manage software development projects throughout the IT life cycle. Team Foundation Server 2010 enables everyone on the team to collaborate more effectively, be more agile and deliver better quality software while building and sharing institutional knowledge. Project artifacts and data from work item tracking, source control, builds, and testing tools are stored in a data warehouse and powerful reporting and dashboards provide historical trending, full traceability and real-time visibility into quality and progress against business intent.

## Creativity Unleashed

Designed from the ground up as a collaboration platform to automate the software development process. Let Team Foundation Server 2010 manage your software development process and facilitate collaboration so that your teams are freed up from mundane non-coding tasks and empowered to unleash their creativity.

## Simplicity Through Integration

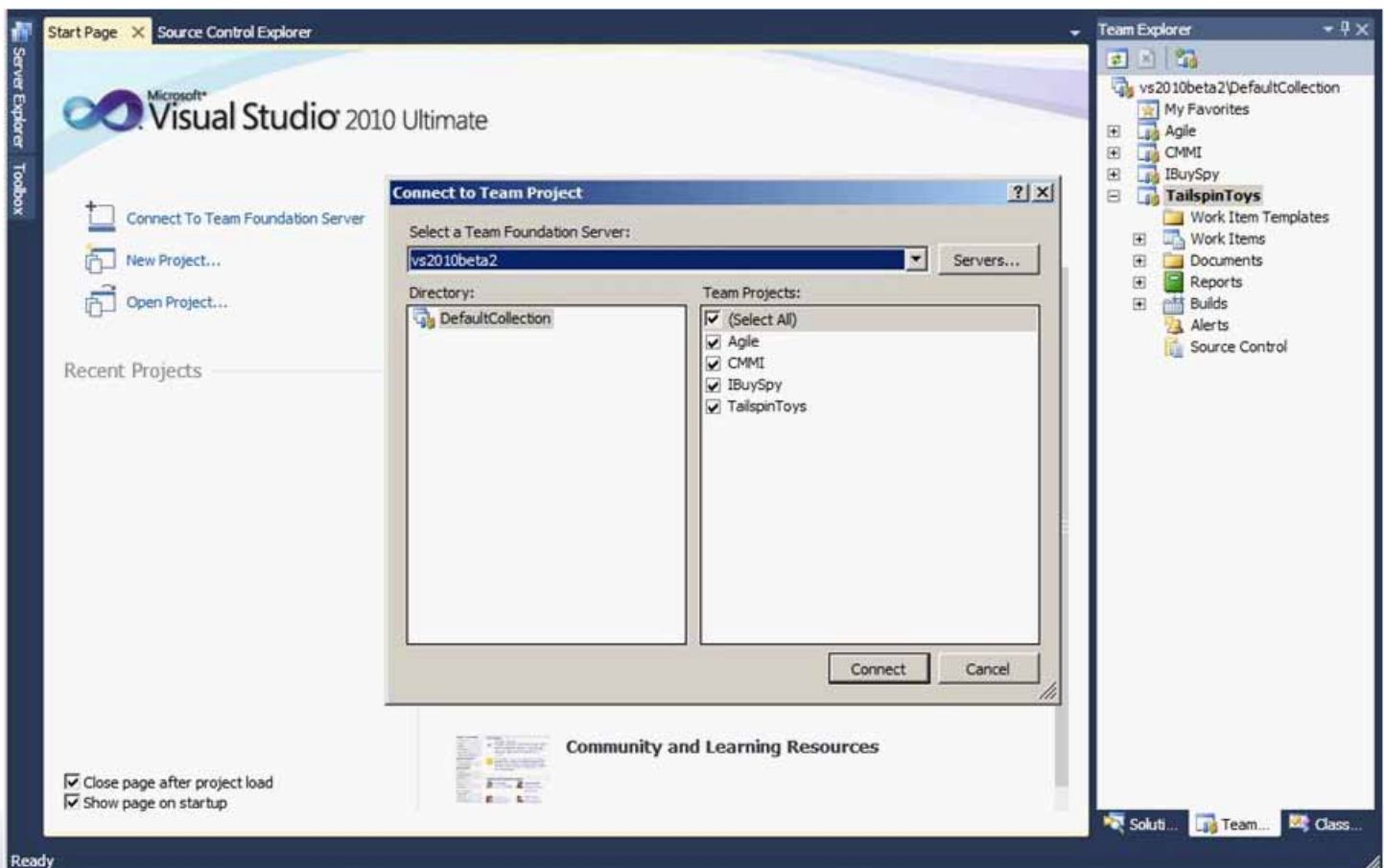
Tools, processes and project artifacts come together to simplify the collaboration of people across various functional disciplines, helping them work better together and be more productive.

## Quality Code Ensured

Monitor quality and progress in real time. Ensure that defects and regressions are discovered at the earliest possible moment with powerful features like build automation and gated check-ins.

## The collaboration platform at the core of Microsoft's application lifecycle management solution.

Visual Studio Team Foundation Server 2010 provides workflow automation and integrated processes, tools and project artifacts to simplify the collaboration of people across functional disciplines. The central repository enables rich collaboration in the context of the tasks the team is working on.



# Top ten benefits

- **Streamline The Flow of Data Across Your Entire Team**

Project artifacts are stored in a central repository that facilitates in-context collaboration to reduce waste in hand-over time between tasks and streamlines the development process. Team members can instead focus on delivering value over transitioning information between roles. In addition, seamless support for Eclipse extends these collaboration benefits to heterogenous environments.

- **Reduce Risk with Real-time Visibility**

Powerful reporting and dashboards provide historical trending and real-time visibility into overall project health. Real-time metrics give you early warnings of potential problems so you can be proactive and make data-driven decisions and course corrections.

- **End-to-end Traceability**

Define, query and report on custom relationships between requirements, work items and test cases. Full traceability lets you track progress and quality back to business goals and customer requirements.

- **Lightweight Agile Planning Tools**

The new Microsoft® Excel Agile Planning Workbook makes it easy for teams to adopt agile software development methodologies like SCRUM. Use it to create and manage user stories and product backlog, estimate the team's velocity, and break the project down into iterations. The Iteration Backlog enables you to plan iterations and track progress.

- **Project and Portfolio Management**

Integration with Microsoft Project and Office Project Server enables business stake holders and project managers to gain insight into the health of inflight projects, understand how they support the business needs and help identify ways to improve existing processes.

- **Simplified Installation for Smaller Teams**

Smaller teams and individual developers can choose the new Basic Install option to leverage the power of Team Foundation Server 2010 without the footprint of the full installation.

- **Understand Parallel Development**

Reduce the complexity in branching and merging with powerful new visualization tools. Understand the scope, organization and maintenance of your source code and easily identify, track and manage changes across branches.

- **Prevent Broken Builds**

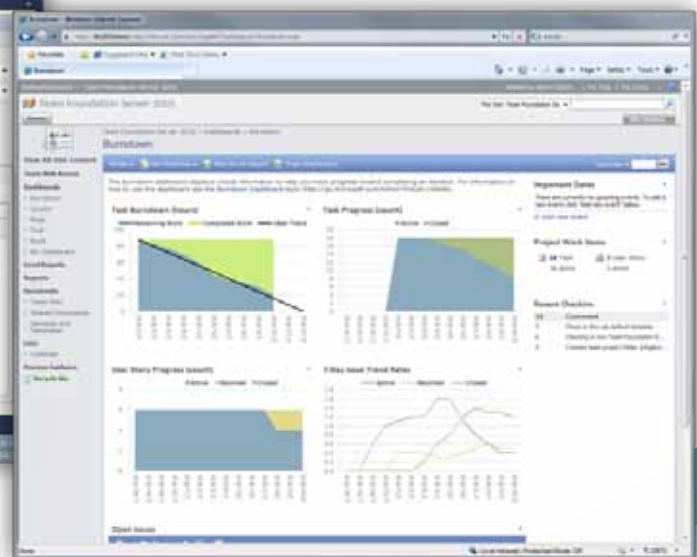
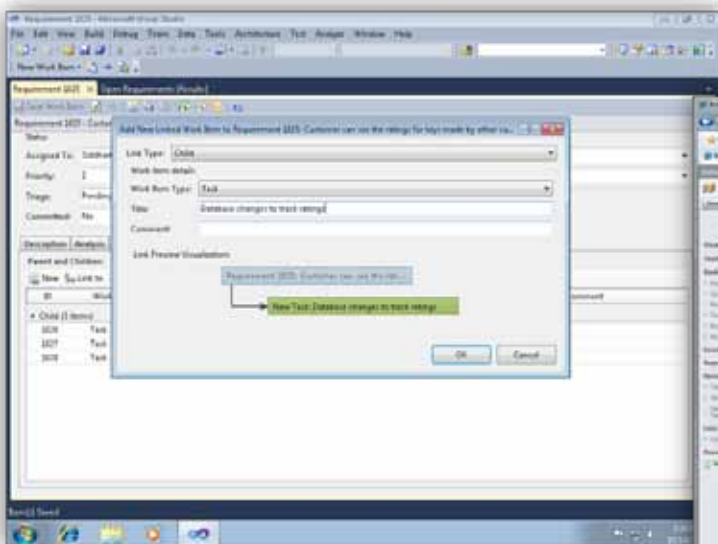
The new gated check-in feature helps teams working in the same branch to prevent costly and time consuming build breaks by testing code in isolation before it goes into the full repository.

- **Flexible Build Automation**

Windows Workflow-based builds with powerful features like build queuing and build agent pooling enable teams to easily customize, manage and scale out their build environments.

- **Enterprise Scalability**

Network Load Balancing, 64-bit server support and new project collection isolation features let large teams scale Team Foundation Server 2010 installations to meet their demands.



| Visual Studio 2010 Feature Comparison  | Visual Studio 2010 |         |              | Visual Studio Test Professional 2010 |
|--|--------------------|---------|--------------|--------------------------------------|
|  | Ultimate           | Premium | Professional |                                      |
| <b>Development Platform Support</b>  |                    |         |              |                                      |
| Windows, Web and Cloud Development   | •                  | •       | •            |                                      |
| Office and SharePoint Development  | •                  | •       | •            |                                      |
| <b>Architecture and Modeling</b>   |                    |         |              |                                      |
| Architecture Explorer, Layer Diagram and Dependency Validation   | •                  |         |              |                                      |
| Read-only diagrams (UML, Layer, DGML Graphs)   | •                  | •       |              |                                      |
| <b>Database Development</b>  |                    |         |              |                                      |
| Deployment, Change Management, Test Data Generation, Unit Testing  | •                  | •       |              |                                      |
| <b>Debugging, Diagnostics and Testing</b>  |                    |         |              |                                      |
| IntelliTrace™ (Historical Debugging), Web Performance Testing, Load Testing <sup>1</sup>   | •                  |         |              |                                      |
| Static Code Analysis, Code Metrics, Profiling, Code Coverage, Test Impact Analysis, Coded UI Test  | •                  | •       |              |                                      |
| Unit Testing   | •                  | •       | •            |                                      |
| <b>Test and Lab Management</b>   |                    |         |              |                                      |
| Microsoft® Test Manager, Test Case Management, Manual Test Execution, Fast Forward for Manual Testing  | •                  |         |              | •                                    |
| Virtual environment setup & tear down, Provision environment from template, Checkpoint environment through Test Manager 2010 (Visual Studio Lab Management 2010 required) <sup>2</sup> | •                  |         |              | •                                    |
| <b>Team Foundation Server</b>  |                    |         |              |                                      |
| Version Control, Work Item Tracking, Build Automation, Team Portal, Reporting & Business Intelligence, Agile Planning Workbook, Team Explorer  | •                  | •       | •            | •                                    |
| <b>MSDN Subscription benefits</b>  |                    |         |              |                                      |
| Priority support in MSDN Forums, MSDN Magazine, Flash newsletter, Online Concierge   | •                  | •       | •            | •                                    |
| Technical support incidents  | 4                  | 4       | 2            | 2                                    |
| Microsoft® e-learning collections (typically 10 courses or 20 hours)   | 2                  | 2       | 1            | 1                                    |
| Windows® Azure™ Platform   | •†                 | •†      | •†           |                                      |
| <b>MSDN Subscription - Software for Production Use</b>   |                    |         |              |                                      |
| Microsoft® Visual Studio® Team Foundation Server 2010 plus one CAL   | •                  | •       | •            | •                                    |
| Microsoft® Office Professional Plus 2010, Project Professional 2010, Visio® Premium 2010, Expression Studio 3  | •                  | •       |              |                                      |
| <b>MSDN Subscription - Software for Development and Test Use<sup>3</sup></b>   |                    |         |              |                                      |
| Windows (client and server operating systems), Microsoft® SQL Server®, Toolkits, Software Development Kits, Driver Development Kits  | •                  | •       | •            | •                                    |
| Microsoft® Office, Dynamics®, All other Servers, Windows Embedded  | •                  | •       |              |                                      |

† Azure benefits vary by subscription level; see the MSDN Subscription site for details: <http://msdn.microsoft.com/subscriptions/> Subject to change and subject to availability.

1. May require one or more Microsoft® Visual Studio® Load Test Virtual User Pack 2010.

2. Microsoft® Visual Studio® Lab Management 2010 is not included with Visual Studio 2010 Ultimate.

3. Per-user license allows unlimited installations and use for designing, developing, testing, and demonstrating applications. UML is a registered trademark of Object Management Group, Inc.

This material is provided for informational purposes only. Microsoft makes no warranties, express or implied.